

**HAYMAN REESE**  
**PART No: 03058RW**  
**BMW X5**

## **INSTALLATION INSTRUCTIONS**

PLEASE ENSURE THAT ALL INSTRUCTIONS ARE UNDERSTOOD PRIOR TO FITMENT  
PLACE THESE INSTRUCTIONS IN THE VEHICLE'S GLOVEBOX AFTER INSTALLATION IS COMPLETED



**Installation Time: Approx 90 Mins**

### **Towbar Installation Instructions**

### **Towbar capacity**

#### **BMW X5**

**Part Number 03058RW**

**Max Towing Braked 2700 kg**

**Max Towing Unbraked 750 kg**

**Max Static Ball Load 270 kg**

Hayman Reese (Cequent)  
PO Box 4050, Dandenong South VIC 3164  
Phone 1800 812 017 Email [info@haymanreese.com.au](mailto:info@haymanreese.com.au)

## INSTALLATION INSTRUCTIONS

PLEASE ENSURE THAT ALL INSTRUCTIONS ARE UNDERSTOOD PRIOR TO FITMENT  
PLACE THESE INSTRUCTIONS IN THE VEHICLE'S GLOVEBOX AFTER INSTALLATION IS COMPLETED

### Warning:

1. Do not, drill, cut, weld or otherwise modify the towbar.
2. If you are using electric welding on a motor vehicle, **always** check that the vehicle is not equipped with electronic engine or instrument management equipment. Failure to do so could **destroy** any onboard computers. If in doubt, check with the vehicle's manufacturer.
3. If TBM is used in inverted position tow ball may make contact with rear tailgate when lowered, which could cause damage.

### General:

1. Ensure all hardware items have been included refer to assembly diagram.
2. It is recommended that the instructions are read through and completely understood before making any attempt to fit this product.
3. Be wary of any changes to vehicle designs or other accessories that may conflict with the installation of this product.
4. Before drilling ensure that the area is clear of fuel, electrical & other components.
5. All holes drilled into the body panels shall have all burrs & swarf removed then coated with a suitable rust preventative paint.
6. The high tensile fasteners supplied with this product were used to achieve the specified rating. If replacement is required ensure that fasteners of the same rating & quality are used. Contact an authorised **Hayman Reese** dealer if further information is required.
7. Ensure that all hardware is fastened to torque list below check fasteners on regular basis.
8. Towbar load rating sticker provided with this product shall be conspicuously located on inside rear end of the driver's door. **(See diagram below).**
9. Hayman Reese recommends that you check your tow ball to ensure that it complies with the Australian standards **AS 4177.2**.
10. **PLEASE NOTE:** It is advised to remove your LUG or TBM when not actually towing so as to produce a clear view of the vehicles registration plate if obscured, and to also provide maximum available departure angle.
11. Pull Pin must be fit in down position.

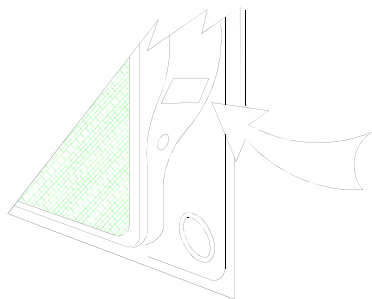
### Tow bar Maintenance and Care.

Hayman Reese recommends that bolt torque's, as listed below, are routinely and regularly inspected and checked for correct tension. Replace any worn or defective parts.

We recommended to remove Tow Ball Mounts (TBM's, tongues or lugs) when not being used for any considerable length of time.

So as to avoid injury, when not towing it is suggested that the tongue, Pull Pin and R-clip are removed then stored in a safe, clean and dry place, away from excessive moisture.

Hitch Pull Pins and spring "R" clips are regularly checked for proper installation. Replace any worn or defective parts.



Place load rating sticker  
inside driver's door here

### RECOMMENDED ASSEMBLY TORQUE LISTING

#### Diameter Grade 8.8 Bolt

|     |          |
|-----|----------|
| M6  | 9.5 Nm   |
| M8  | 21.7 Nm  |
| M10 | 43.4 Nm  |
| M12 | 77.3 Nm  |
| M14 | 146 Nm   |
| M16 | 189.8 Nm |

### FOR TOWING PURPOSES ONLY

For towing capacity details please refer to vehicle owner's manual or to the manufacturer. Overloading can void your warranties.

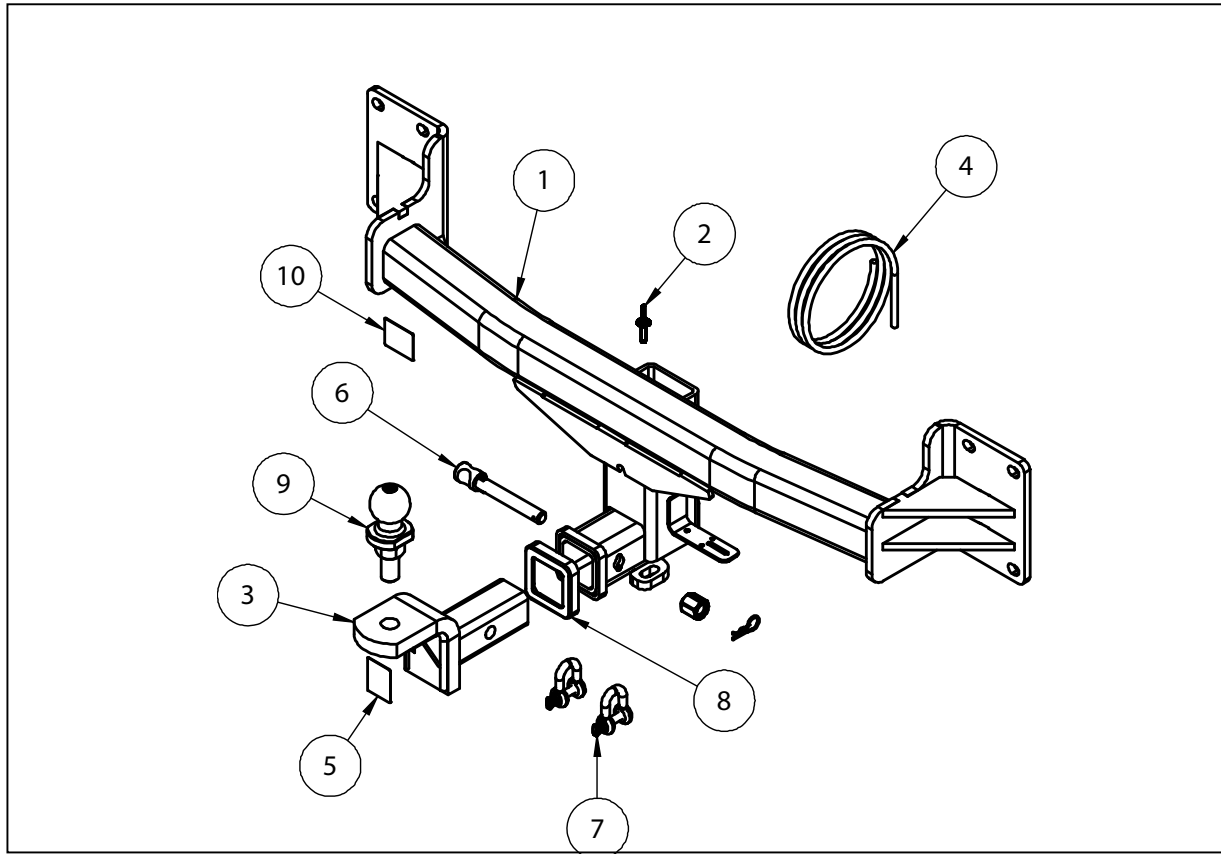
# HAYMAN REESE

PART No: 03058RW

## BMW X5

### INSTALLATION INSTRUCTIONS

PLEASE ENSURE THAT ALL INSTRUCTIONS ARE UNDERSTOOD PRIOR TO FITMENT  
PLACE THESE INSTRUCTIONS IN THE VEHICLES'S GLOVEBOX AFTER INSTALLATION IS COMPLETED



| QTY. | DESCRIPTION                    | ITEM NO. |
|------|--------------------------------|----------|
| 1    | WELDED BMW X6 TB ASSY          | 1        |
| 1    | TBM ASSEMBLY                   | 2        |
| 12   | POP RIVET                      | 3        |
| 1    | WIRING LOOM                    | 4        |
| 1    | H.R STICKER                    | 5        |
| 1    | ANTI-RATTLE PULL PIN ASSY GOLD | 6        |
| 2    | 10mm "D" SHACKLE               | 7        |
| 1    | HITCH BOX COLLAR COVER         | 8        |
| 1    | HR TOWBALL                     | 9        |
| 1    | ACRYLIC COMPLIANCE LABEL       | 10       |

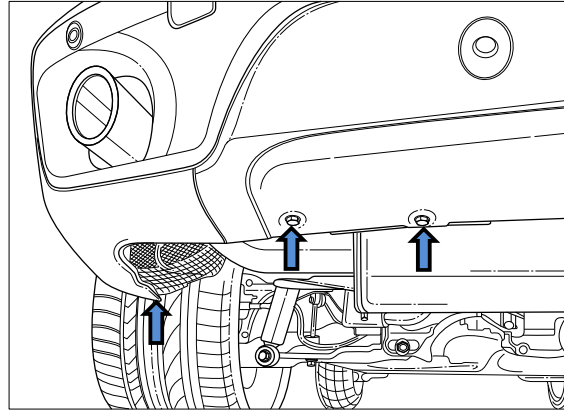
**INSTALLATION INSTRUCTIONS**

PLEASE ENSURE THAT ALL INSTRUCTIONS ARE UNDERSTOOD PRIOR TO FITMENT

PLACE THESE INSTRUCTIONS IN THE VEHICLE'S GLOVEBOX AFTER INSTALLATION IS COMPLETED

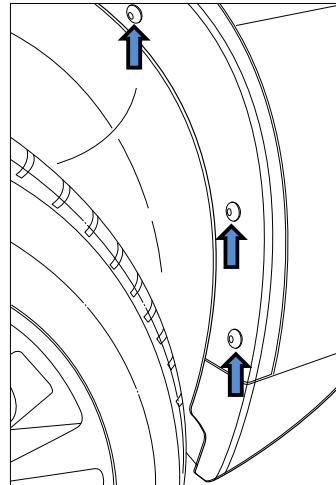
1. Remove 3 screws from under the RHS of the bumper.

Repeat for LHS.



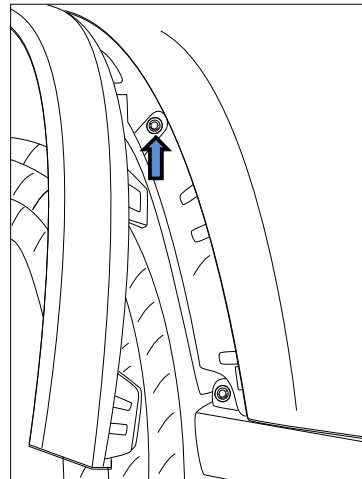
2. Remove 3 plastic rivets under rear wheel arch on the RHS by pushing in the centre pin.

Repeat for LHS.



3. Lift open wheel flare guard then remove 1 screw holding the bumper behind the flare guard.

Repeat for LHS.



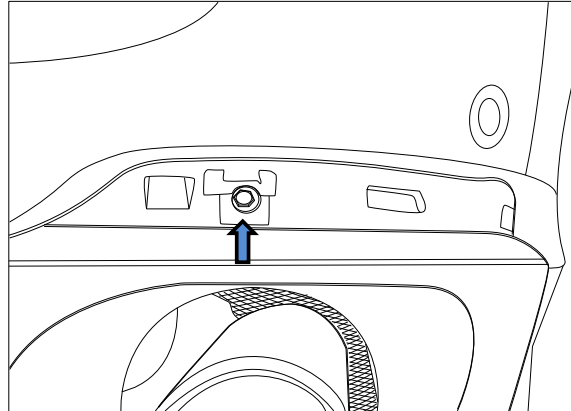
**INSTALLATION INSTRUCTIONS**

PLEASE ENSURE THAT ALL INSTRUCTIONS ARE UNDERSTOOD PRIOR TO FITMENT  
PLACE THESE INSTRUCTIONS IN THE VEHICLE'S GLOVEBOX AFTER INSTALLATION IS COMPLETED

4. Remove rear reflector on the bumper facia on the RHS to expose the Screw.

Remove the Screw.

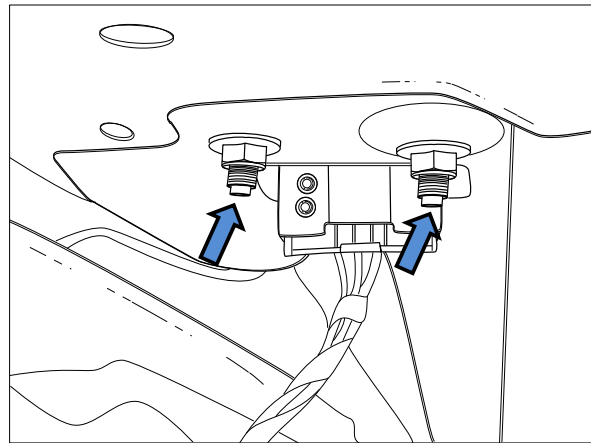
Repeat for LHS.



5. Open tailgate and remove from inside of the vehicle 2 flange nuts securing the RHS taillight to the vehicle.

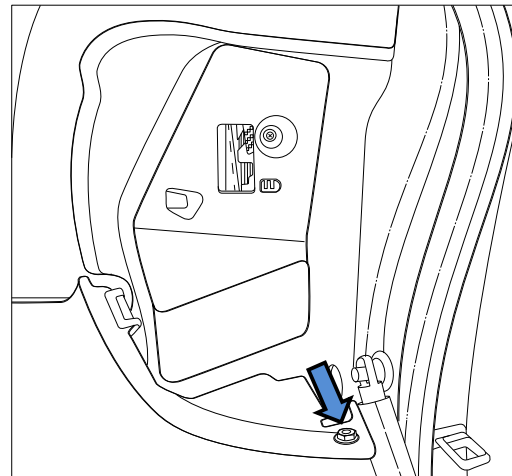
Disconnect the connector and remove the taillight assembly.

Repeat for LHS.



6. Remove Screw located in taillight bumper cavity.

Repeat for LHS.



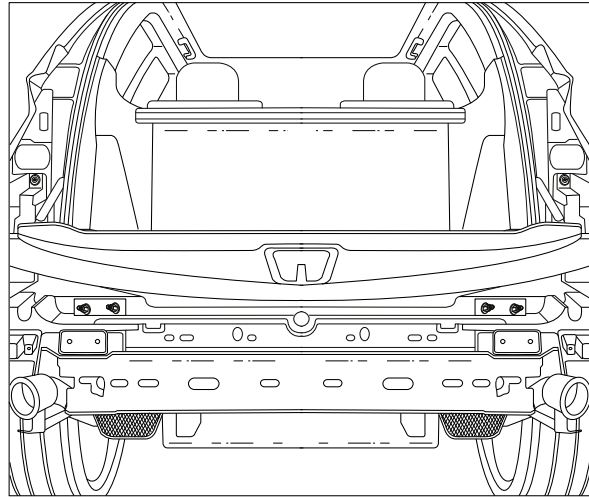
**INSTALLATION INSTRUCTIONS**

PLEASE ENSURE THAT ALL INSTRUCTIONS ARE UNDERSTOOD PRIOR TO FITMENT

PLACE THESE INSTRUCTIONS IN THE VEHICLES'S GLOVEBOX AFTER INSTALLATION IS COMPLETED

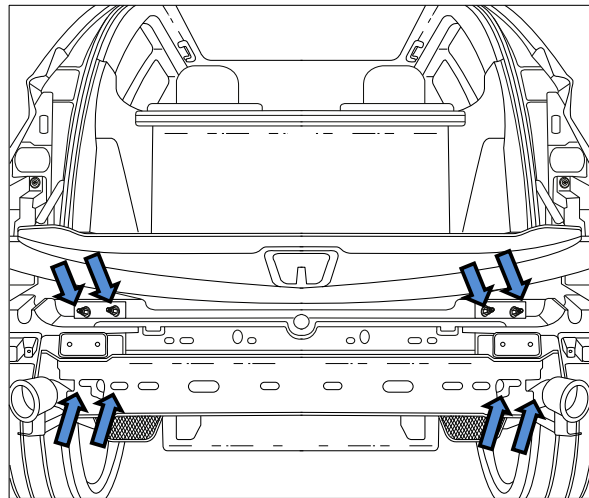
- 7. Remove bumper from the car.**

Ensure any wiring is disconnected.



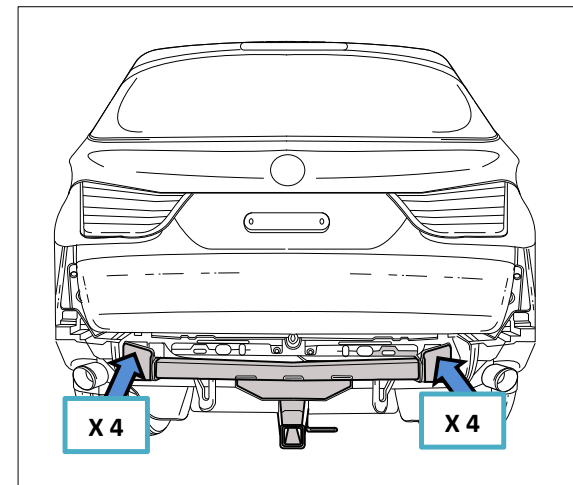
- 8. Remove 8 Nuts holding impact beam and retain nuts for reuse.**

Discard impact beam.



- 9. Fit Towbar into impact beam mounting points, secure with nuts retained from impact beam.**

Torque all nuts to specifications.



**INSTALLATION INSTRUCTIONS**

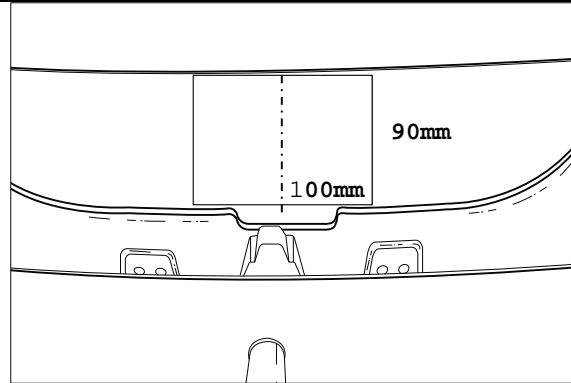
PLEASE ENSURE THAT ALL INSTRUCTIONS ARE UNDERSTOOD PRIOR TO FITMENT

PLACE THESE INSTRUCTIONS IN THE VEHICLES'S GLOVEBOX AFTER INSTALLATION IS COMPLETED

**10.** If the vehicle is F15 refit the bumper and wheel flares using plastic rivets provided.

**11.** If the vehicle is E70, a bumper cut is required ;100mm wide by 90 mm deep section from centre bottom of bumper.

Refit bumper and wheel flares using plastic rivet provided.



**HAYMAN REESE**  
**PART No: 100707-WL**  
**BMW X5, BMW X6, BMW X6 MY15**

**INSTALLATION INSTRUCTIONS**

PLEASE ENSURE THAT INSTRUCTIONS ARE UNDERSTOOD PRIOR TO FITMENT

**Wiring Loom Installation Instructions**

**BMW X5, X6, X6 MY15**

**Part No: 100707-WL**  
**ECU Required: 04829**

**Tail Harness Length Required: 1800mm**

**Wiring Loom Installation Time: Approx. 30 minutes**

**Important**



Due to possible vehicle variations, always confirm any noted vehicle colour wires with a multi-meter to ensure the correct function is identified before soldering or scotch locking.

Issue Date 05-02-15

Page 1

Part No: 100707-WL

Hayman Reese (Cequent)  
PO Box 4050, Dandenong South VIC 3164  
Phone 1800 812 017 Email [info@haymanreese.com.au](mailto:info@haymanreese.com.au)

[www.haymanreese.com.au](http://www.haymanreese.com.au)



**HAYMAN REESE**  
**PART No: 100707-WL**  
**BMW X5, BMW X6, BMW X6 MY15**

## INSTALLATION INSTRUCTIONS

PLEASE ENSURE THAT INSTRUCTIONS ARE UNDERSTOOD PRIOR TO FITMENT

**Note: All steps are generic and suitable for all models unless specified.**

1. Remove the floor carpet cover (1).
2. Remove the LHS and RHS access panel covers (2).



3. Remove the tool storage tray (1) by first removing the fasteners.



4. Remove the LHS storage compartment (1).



Issue Date 05-02-15

Page 2

Part No: 100707-WL

Hayman Reese (Cequent)  
PO Box 4050, Dandenong South VIC 3164  
Phone 1800 812 017 Email [info@haymanreese.com.au](mailto:info@haymanreese.com.au)

[www.haymanreese.com.au](http://www.haymanreese.com.au)



**HAYMAN REESE**  
**PART No: 100707-WL**  
**BMW X5, BMW X6, BMW X6 MY15**

## INSTALLATION INSTRUCTIONS

PLEASE ENSURE THAT INSTRUCTIONS ARE UNDERSTOOD PRIOR TO FITMENT

5. Remove the RHS storage compartment (1).



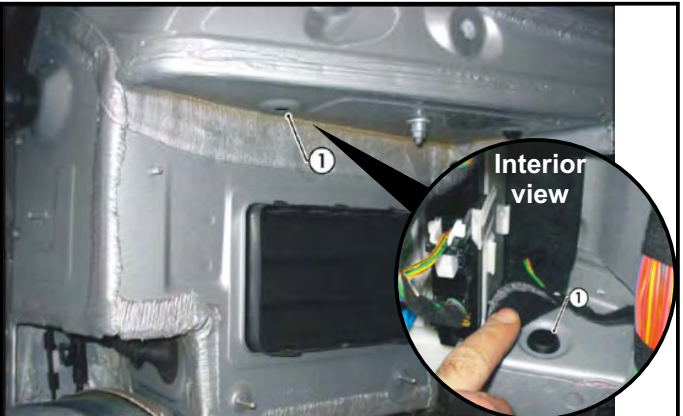
**This Step for BMW X6 MY15 models only:**

6. In the RHS of the luggage compartment in the area shown, drill out a Ø30mm hole into the vehicle sheet metal (1). File down any rough or sharp edges and apply rust inhibitor after drilling.



**These Steps for all models except BMW X6 MY15:**

7. In the RHS of the luggage compartment, lift up the carpet cover and remove the vehicle grommet (1).
8. From the outside of the vehicle, drill out the grommet hole (1) to Ø30mm. File down any rough or sharp edges and spray on rust inhibitor after drilling.



Issue Date 05-02-15

Page 3

Part No: 100707-WL

Hayman Reese (Cequent)  
PO Box 4050, Dandenong South VIC 3164  
Phone 1800 812 017 Email [info@haymanreese.com.au](mailto:info@haymanreese.com.au)

[www.haymanreese.com.au](http://www.haymanreese.com.au)



# HAYMAN REESE

## PART No: 100707-WL

### BMW X5, BMW X6, BMW X6 MY15

## INSTALLATION INSTRUCTIONS

PLEASE ENSURE THAT INSTRUCTIONS ARE UNDERSTOOD PRIOR TO FITMENT

- 9. Always use a multi-meter to confirm wire colours.** Connect the ezy tap (1) to the vehicle harness wire (2) and then connect the trailer harness terminal (3) to the corresponding wire (2).

**For X6 pre-MY15 models:**

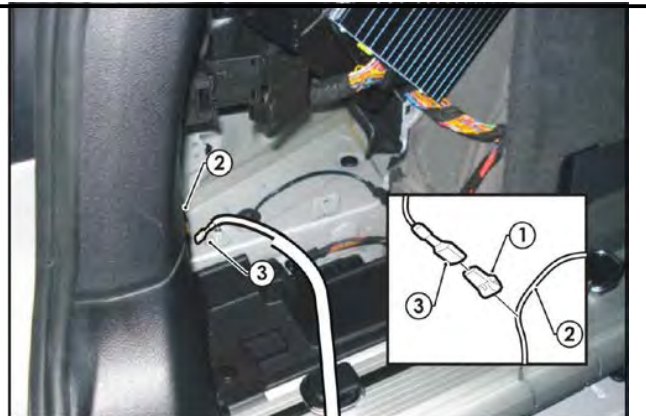
| Function | Trailer Patch  | Vehicle Connector |
|----------|----------------|-------------------|
| L.IND    | YELLOW / BLACK | BLUE / BROWN      |

**For X5 MY10 models:**

| Function | Trailer Patch  | Vehicle Connector |
|----------|----------------|-------------------|
| L.IND    | YELLOW / BLACK | GREEN / BLUE      |

**For X5 MY13 and X6 MY15 models:**

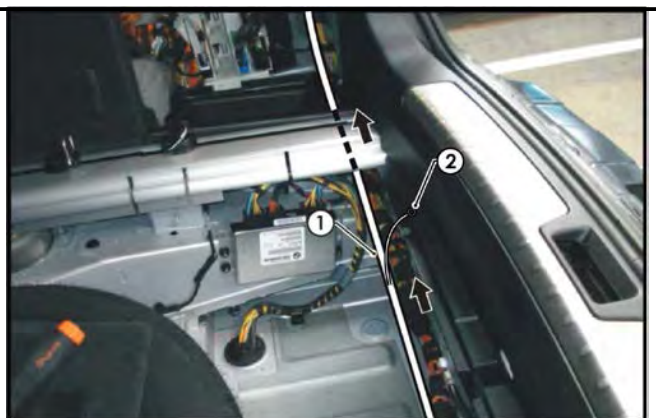
| Function | Trailer Patch  | Vehicle Connector |
|----------|----------------|-------------------|
| L.IND    | YELLOW / BLACK | BLACK / WHITE     |



- 10. Route the trailer patch harness (P/No: 100707-WL) (1) along the vehicle harness and towards the RHS tail light connector.**

**This step for BMW X5 and X6 pre-MY15 only.**

- 11. Connect the trailer patch harness ground ring terminal (2) to the existing vehicle ground point.**

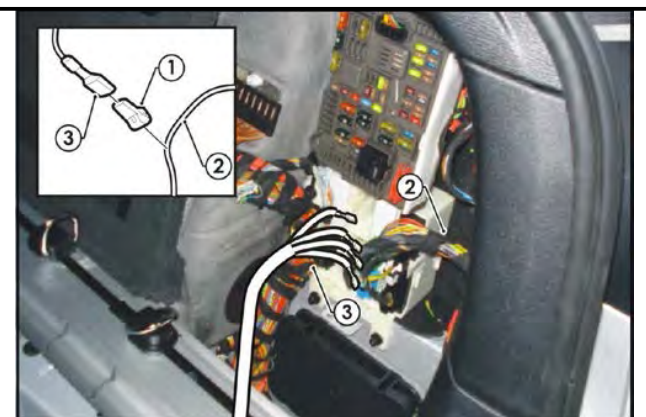


**Refer to the following steps for applicable model variation wire colours (always use a multi-meter to confirm colours):**

**For BMW X5 MY10 models:**

- 12. Following the table below, connect the ezy taps (1) to the vehicle harness wires (2) and then connect the trailer harness terminals (3) to the corresponding wires (2). Go to Step 15.**

| Function | Trailer Patch | Vehicle Connector |
|----------|---------------|-------------------|
| R.IND    | GREEN / BLACK | BLUE / BROWN      |
| REVERSE  | BLACK / WHITE | BLACK / YELLOW    |
| TAIL     | BROWN / BLACK | YELLOW / PURPLE   |
| BRAKES   | RED / BLACK   | BLACK / BLUE      |



Issue Date 05-02-15

Page 4

Part No: 100707-WL

Hayman Reese (Cequent)

PO Box 4050, Dandenong South VIC 3164

Phone 1800 812 017 Email [info@haymanreese.com.au](mailto:info@haymanreese.com.au)

[www.haymanreese.com.au](http://www.haymanreese.com.au)



# HAYMAN REESE

## PART No: 100707-WL

### BMW X5, BMW X6, BMW X6 MY15

## INSTALLATION INSTRUCTIONS

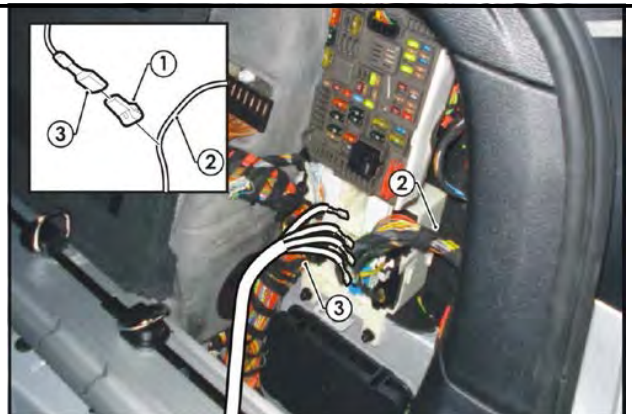
PLEASE ENSURE THAT INSTRUCTIONS ARE UNDERSTOOD PRIOR TO FITMENT

**Always use a multi-meter to confirm wire colours.**

**For BMW X6 MY15 models:**

13. Following the table below, connect the ezy taps (1) to the vehicle harness wires (2) and then connect the trailer patch terminals (3) to the corresponding wires (2). Go to Step 15.

| Function | Trailer Patch | Vehicle Connector |
|----------|---------------|-------------------|
| R.IND    | GREEN / BLACK | BLACK / WHITE     |
| REVERSE  | BLACK / WHITE | YELLOW / BLACK    |
| TAIL     | BROWN / BLACK | GREEN / YELLOW    |
| BRAKES   | RED / BLACK   | BLACK / BLUE      |

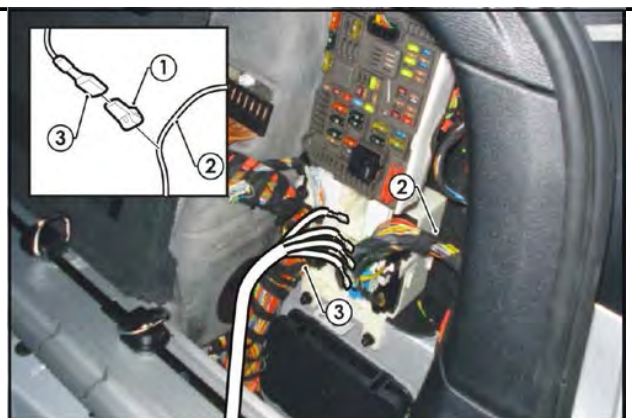


**Always use a multi-meter to confirm wire colours.**

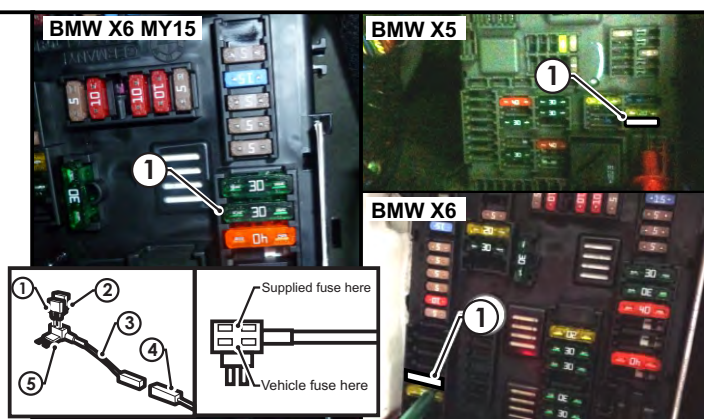
**For all other models:**

14. Following the table below, connect the ezy taps (1) to the vehicle harness wires (2) and then connect the trailer patch terminals (3) to the corresponding wires (2). Go to Step 15.

| Function | Trailer Patch | Vehicle Connector |
|----------|---------------|-------------------|
| R.IND    | GREEN / BLACK | BLUE / BROWN      |
| REVERSE  | BLACK / WHITE | BLACK / YELLOW    |
| TAIL     | BROWN / BLACK | YELLOW / PURPLE   |
| BRAKES   | RED / BLACK   | BLACK / WHITE     |



15. Remove the existing vehicle 30-amp fuse (1).  
 16. Slot the supplied 30-amp fuse (2) into the upper slot of the add-a-fuse harness (3).  
 17. Slot the existing vehicle 30-amp fuse (1) into the lower slot of the add-a-fuse harness (3).  
 18. Connect the add-a-fuse harness to the mating trailer patch harness connector (4).  
 19. Insert the add-a-fuse harness fuse connector (3) into the vacant slot, with the orientation of the fuses pointing down.



Issue Date 05-02-15

Page 5

Part No: 100707-WL

Hayman Reese (Cequent)  
 PO Box 4050, Dandenong South VIC 3164  
 Phone 1800 812 017 Email [info@haymanreese.com.au](mailto:info@haymanreese.com.au)

[www.haymanreese.com.au](http://www.haymanreese.com.au)



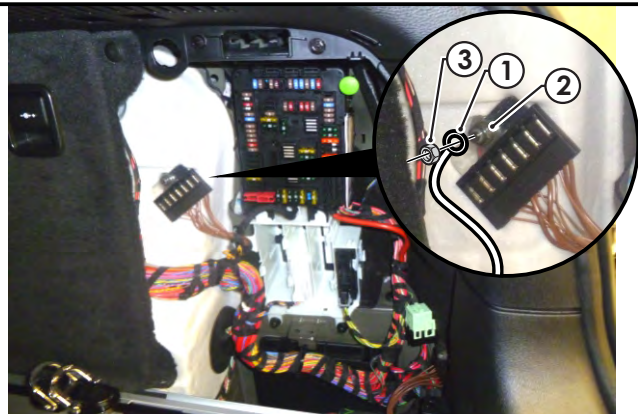
**HAYMAN REESE**  
**PART No: 100707-WL**  
**BMW X5, BMW X6, BMW X6 MY15**

## INSTALLATION INSTRUCTIONS

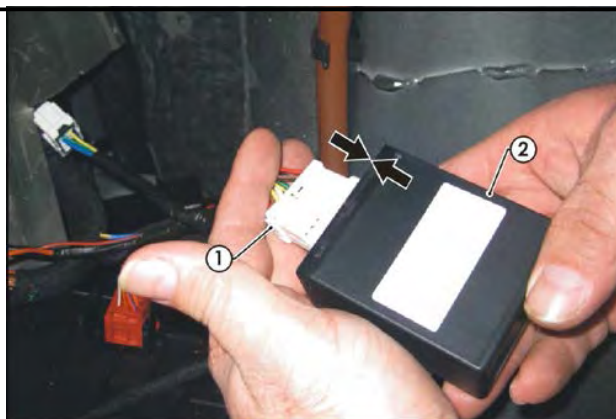
PLEASE ENSURE THAT INSTRUCTIONS ARE UNDERSTOOD PRIOR TO FITMENT

**This step for BMW X6 MY15 only.**

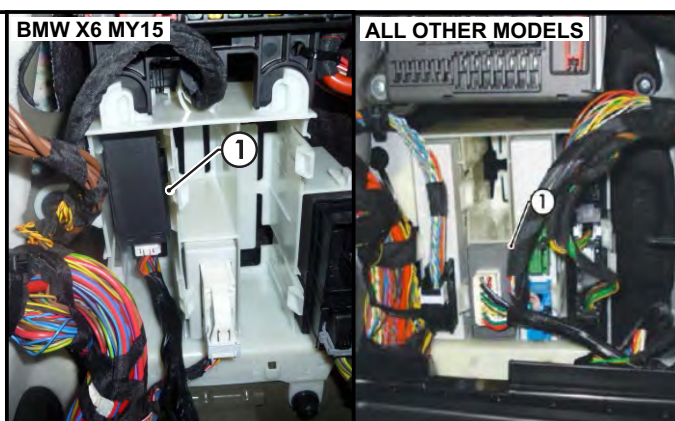
- 20.** Secure the vehicle ground ring terminal (1) to the vehicle grounding point (2) using the existing fastener (3).



- 21.** Connect the trailer harness 12-way connector (1) to the ECU (P/No: 04829) (2).



- 22.** Slot the ECU (1) into the vacant slot underneath the fuse panel.



Issue Date 05-02-15

Page 6

Part No: 100707-WL

Hayman Reese (Cequent)  
PO Box 4050, Dandenong South VIC 3164  
Phone 1800 812 017 Email [info@haymanreese.com.au](mailto:info@haymanreese.com.au)

[www.haymanreese.com.au](http://www.haymanreese.com.au)

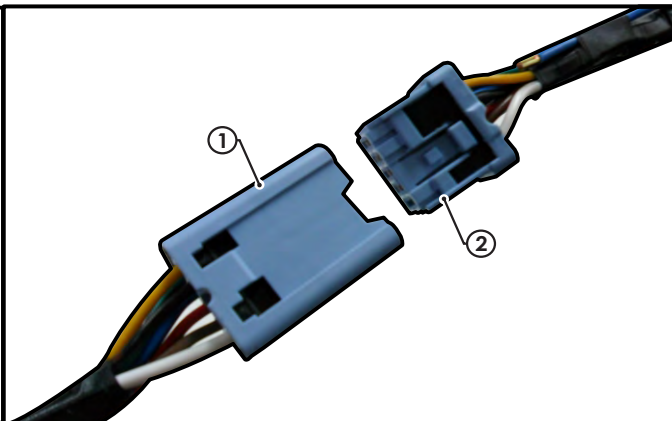


**HAYMAN REESE**  
**PART No: 100707-WL**  
**BMW X5, BMW X6, BMW X6 MY15**

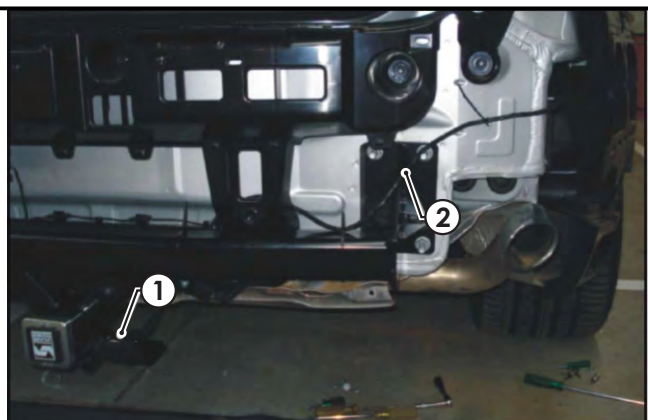
## INSTALLATION INSTRUCTIONS

PLEASE ENSURE THAT INSTRUCTIONS ARE UNDERSTOOD PRIOR TO FITMENT

23. Connect the trailer harness 8-way connector (1) to the tail harness (tail length 1800mm) mating connector (2).



24. Mount the trailer socket (1) to the towbar mounting bracket using M4 fasteners (not supplied).
25. Route the tail harness (2) through the previously drilled out grommet hole and towards the towbar.
26. Ensure the tail harness grommet is seated correctly and secured in place using a cable tie (not supplied)



27. Test the trailer wiring harness function using a light board or multi-meter.
28. Secure all harnesses using cable ties (not supplied).
29. Re-fit all removed parts and secure all fasteners, ensuring there are no squeaks or rattles.
30. Place the fitting instructions in the glove box after fitment.

Issue Date 05-02-15

Page 7

Part No: 100707-WL

Hayman Reese (Cequent)  
PO Box 4050, Dandenong South VIC 3164  
Phone 1800 812 017 Email [info@haymanreese.com.au](mailto:info@haymanreese.com.au)

[www.haymanreese.com.au](http://www.haymanreese.com.au)





# FITTING INSTRUCTIONS

## Smart Pin (55070BL)

• These fitting instructions are supplied to ensure understanding of how the SMART PIN should be fitted and used correctly.

• Once installed, we recommend **ALL** instructions are kept and placed in the vehicle glove box.

**NOTE: Routine maintenance and inspection of the towbar & SMART PIN is required. Regularly inspect for wear and check the tightness of the SMART PIN NUT. Follow instructions below to retighten the nut when necessary.**

**\*Do not tow with your vehicle if the R CLIP or the SMART PIN NUT is loose or missing. Replacement parts are available from your Hayman Reese Distributor.**

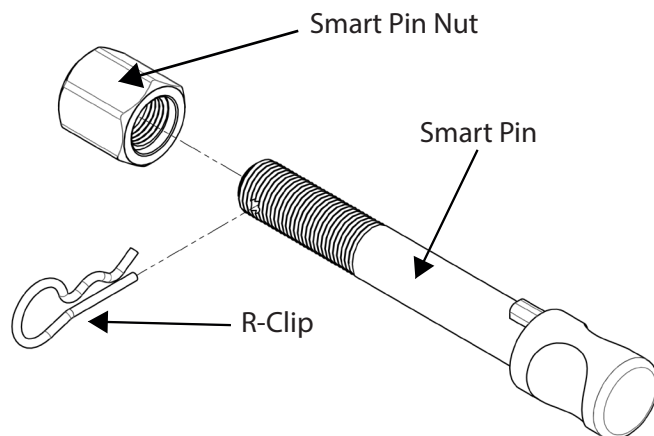


Fig 1. Smart Pin assembly

### STEP 1

Insert Trailer Ball Mount (TBM) into towbar HITCHBOX, aligning hole in TBM SHANK with hole in HITCHBOX (Fig. 2).

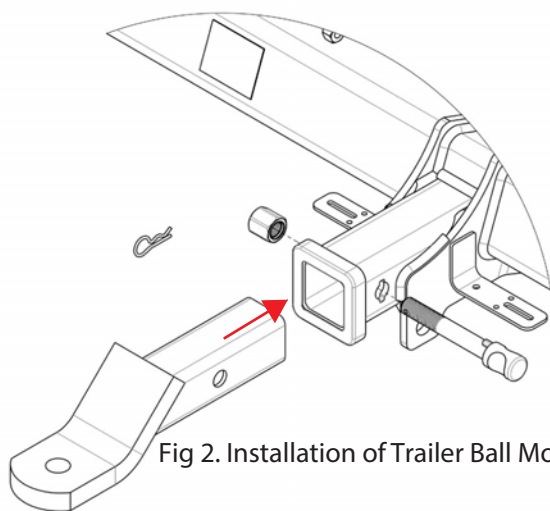


Fig 2. Installation of Trailer Ball Mount

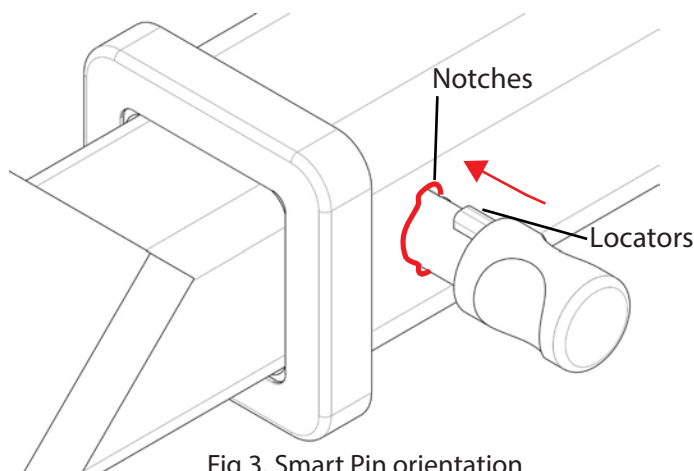


Fig 3. Smart Pin orientation

### STEP 2

Insert SMART PIN through hole in HITCHBOX and hole in TBM SHANK; ensure the LOCATORS are inserted into the NOTCHES in the HITCHBOX (Fig. 3).

### STEP 3

Screw SMART PIN NUT onto SMART PIN; tighten SMART PIN NUT until finger tight, ensuring TBM is restrained from movement.

### STEP 4

Tighten SMART PIN NUT by turning nut a further 1/8th of a turn in the clockwise direction using a 24mm spanner (Fig 4).

### STEP 5

Install SMART PIN R CLIP through the hole on the SMART PIN (Fig. 1).

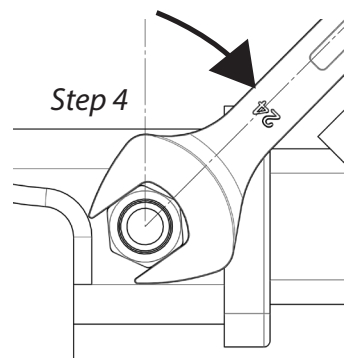


Fig 4. Tightening of Smart Pin Nut