

HAYMAN REESE

PART No: 41292

CARGO BARRIER

INSTALLATION INSTRUCTIONS

PLEASE ENSURE THAT INSTRUCTIONS ARE UNDERSTOOD PRIOR TO FITMENT

Vehicle Make: Toyota

Vehicle Model: Hiace 550N 6.0 LWB

Applicability: Non Side Curtain Airbag Vehicle

Vehicle Type: Van

Vehicle Years of Manufacture: 04-2005 Production onwards

Rating: 60Kg Single Mass

Location: Behind First Row Seat

CRD Fitted: No

General

1. It is recommended that the barrier be fitted by an authorised **HAYMAN REESE** dealer.
2. Read and ensure that the instructions are fully understood before making any attempt to fit this product.
3. Use a suitable stop on drills to prevent drilling through the roof.
4. It is recommended that new installers use masking tape to mark out and confirm location before drilling holes. Masking tape can also be used as an added protection against trim and carpet damage.
5. Be wary of any changes to vehicle designs or other accessories that may conflict with the fitting of the cargo barrier. Seat belt anchors must not be located within 100 mm of the anchor plates.
6. Before drilling, ensure that area is clear of fuel, electrical, or other components.
7. Do not attach the barrier to the vehicle using seat belt or a child restraint device or its anchorage.
8. Do not obstruct seat belts, child restraints, or their operation.
9. The rating plaque shall not be removed from the cargo barrier.
10. Use care when applying rust preventative to avoid skin or eye irritation.
11. Use safety glasses when using electric drill and clean up swarf as soon as possible.

Tools Required for Installation of this product

13 mm two speed electric drill
19mm hole saw with pilot drill
19mm Vinyl Cutter
Centre punch.
Hammer.
Metric Allen key set.
Masking tape.
Marking pen.
Metric 1/2" socket set.
Rule or measuring tape

WARNING: - ENSURE A NON CUTTING PILOT IS USED IN HOLES SAWS WHERE PILOT HOLE HAS BEEN DRILLED TO PREVENT ROOF PANEL DAMAGE.

Issue Date 07-Jun-2012

Page 1

Part No: 41292

Hayman Reese (Cequent)
PO Box 4397, Keysborough, VIC 3173
Phone 1800 812 017

www.haymanreese.com.au



HAYMAN REESE

PART No: 41292

CARGO BARRIER

INSTALLATION INSTRUCTIONS

PLEASE ENSURE THAT INSTRUCTIONS ARE UNDERSTOOD PRIOR TO FITMENT

LOCATION	PART NO.	QTY.	DESCRIPTION	ITEM NO.
ASSEMBLY	A41292-A1	1	Frame Assembly	1
ASSEMBLY	40443	1	CARTON 1500 X 1405 X125	2
ASSEMBLY	PC356	1	Compliance Plaque	3
ASSEMBLY	40127	4	C\TIE SMALL	4
ASSEMBLY	PG589	1	Compliance Plate Sticker	5
ASSEMBLY	PG590	1	Carton Label	6
ASSEMBLY	40431	2	POLY BLOCK FOAM	7
BOLT PACK	40105	2	BUSH RUBBER 25 X 9.5	8
BOLT PACK	92047	2	M10 x 30 1.5P COACH BOLT	9
BOLT PACK	40102	2	HAND KNOB	10
BOLT PACK	92358	6	WASHER M10 WAVE	11
BOLT PACK	PA223	4	Washer Flat M10 x 23 x 2 z/p	12
BOLT PACK	A41292-2	2	Top Strap	13
BOLT PACK	40122	2	PLASTIC BUSH 51mm	14
BOLT PACK	PD463	4	Anchor Plate	15
BOLT PACK	PD373	4	Cover Plate	16
BOLT PACK	40136	2	BUSH PLASTIC 5mm	17
BOLT PACK	40125	2	25 mm CARGO BOLT	18
BOLT PACK	92512	8	M6 X 16 BUTTON HEAD	19
BOLT PACK	92331	8	M6 SPRING WASHER	20
BOLT PACK	40124	1	Cargo Bolt 70mm	21
BOLT PACK	41292-FI&CI	1	Fitting/Customer Instructions	22



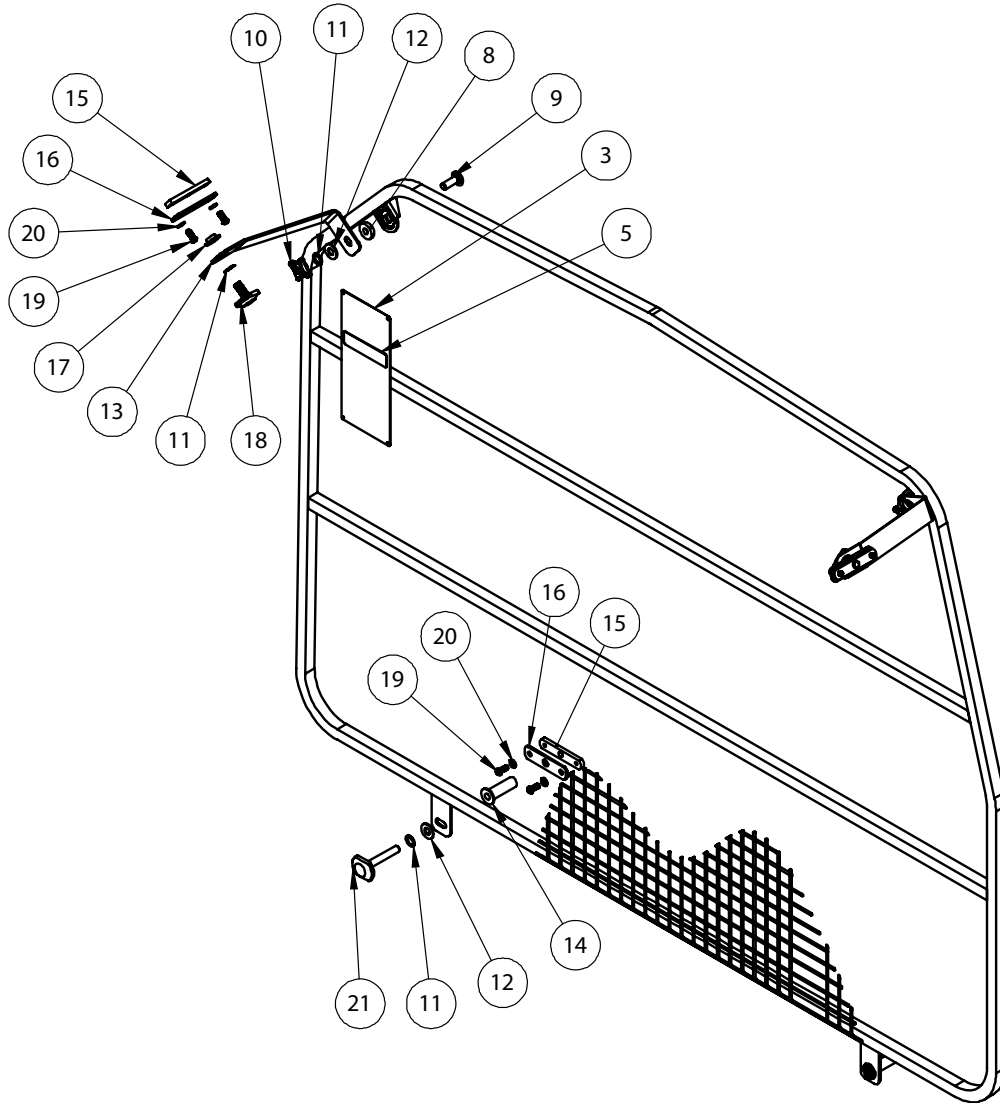
HAYMAN REESE

PART No: 41292

CARGO BARRIER

INSTALLATION INSTRUCTIONS

PLEASE ENSURE THAT INSTRUCTIONS ARE UNDERSTOOD PRIOR TO FITMENT



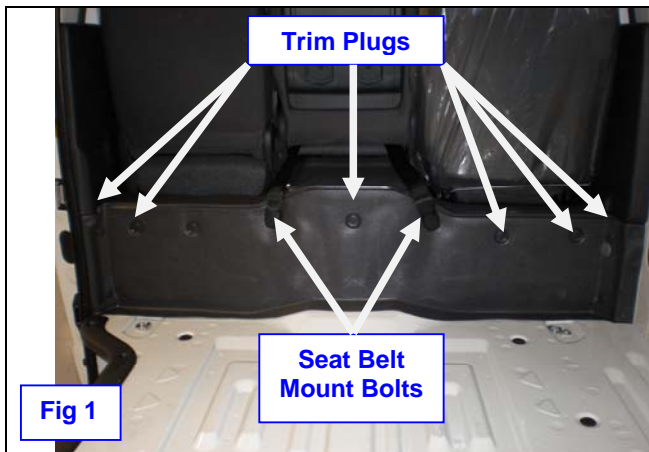
HAYMAN REESE

PART No: 41292

CARGO BARRIER

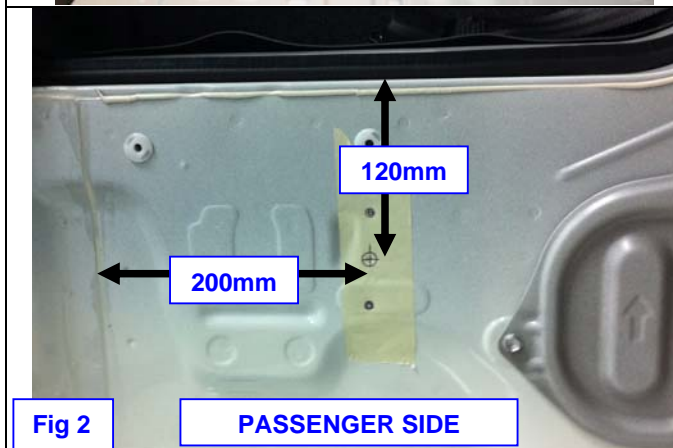
INSTALLATION INSTRUCTIONS

PLEASE ENSURE THAT INSTRUCTIONS ARE UNDERSTOOD PRIOR TO FITMENT



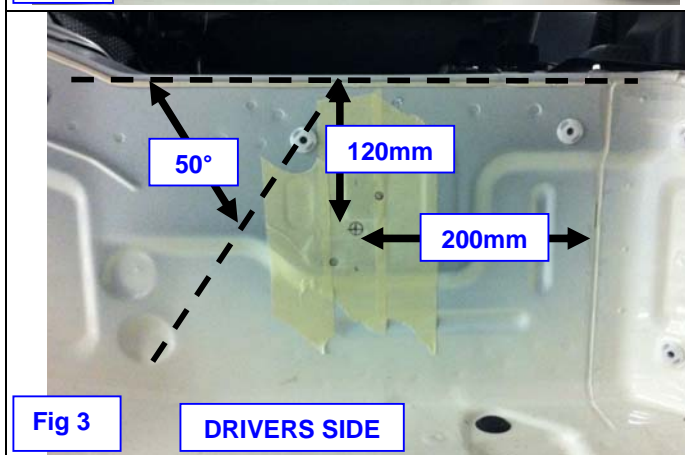
1. Removing trim

- Using a trim plug removal tool, remove all trim plugs detailed in Fig. 1.
- Remove plastic covers from seat belt mounts and remove the seat belt mount bolts.
- With all trim plugs and fasteners removed, peel the bulk head trim piece off the vehicle.



2. Installing bottom anchor plates

- Using a ruler, measure 200mm in from the edge of the panel overlap and 120mm down from the top of the bulk head. Place masking tape over this area and mark the measured point.
- With the centre hole marked, position a cover plate (PD373) vertically over the marked hole and mark the outer 7mm holes on the masking tape as shown in Fig. 2.
- Passenger side shown. Follow step 3 for drivers side.



3. Installing bottom anchor plates

- Using a ruler, measure 200mm in from the edge of the panel overlap and 120mm down from the top of the bulk head. Place masking tape over this area and mark the measured point.
- With the centre hole marked, place a cover plate (PD373) over the marked hole and angle the plate approximately 50° from the top of the bulkhead. Mark the outer 7mm holes on the masking tape as shown in Fig. 3.
- Driver's side shown.

Issue Date 07-Jun-2012

Page 4

Part No: 41292

Hayman Reese (Cequent)
PO Box 4397, Keysborough, VIC 3173
Phone 1800 812 017

www.haymanreese.com.au



HAYMAN REESE

PART No: 41292

CARGO BARRIER

INSTALLATION INSTRUCTIONS

PLEASE ENSURE THAT INSTRUCTIONS ARE UNDERSTOOD PRIOR TO FITMENT



Fig 4

4. Installing the bottom anchor plates

- a. With all the holes marked, use a centre punch to mark these points.
- b. Using a 7mm drill piece, drill all marked points as shown in Fig. 4.
- c. Repeat for passenger side.

CAUTION: Ensure a drill stop set to 10mm or less is used when drilling through the bulk head. This will ensure the drill piece will not puncture the BATTERY.



Fig 5

5. Installing the bottom anchor plates

- a. Using a 19mm hole saw with a non cutting pilot, drill the centre hole of each mount point.
- b. Deburr the edges of all the holes using a deburring tool as shown in Fig. 5.
- c. Coat all raw edges with anti-rust grease.

CAUTION: Ensure a non-cutting pilot is used when drilling through the bulk head. This will ensure the drill piece will not puncture the BATTERY.



Fig 6

6. Installing the bottom anchor plates

- a. Using a cable tie provided, insert the cable tie through the anchor plate (PD463) and insert the anchor plate into the 19mm hole.
- b. With the anchor plate inside the bulk head, place the cover plate over the cable tie and secure this mounting assembly to the bulk head using the M6 button head bolts and M6 spring washers.
- c. Cut head of cable tie off.
- d. Passenger side shown, Repeat for drivers side.

HAYMAN REESE

PART No: 41292

CARGO BARRIER

INSTALLATION INSTRUCTIONS

PLEASE ENSURE THAT INSTRUCTIONS ARE UNDERSTOOD PRIOR TO FITMENT

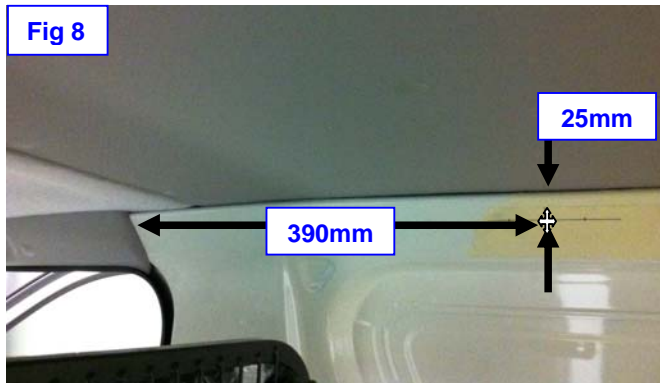
Fig 7



7. Installing bottom anchor plates

- Using the M10 spike provided, screw this spike into the mount point and reinstall the trim.
- Press down on the trim to reveal the tip of the spike.
- Mark this point on the trim and using a 19mm vinyl cutter, cut a hole at this marked point.
- Remove the spike and re-install the trim. Repeat for driver's side.

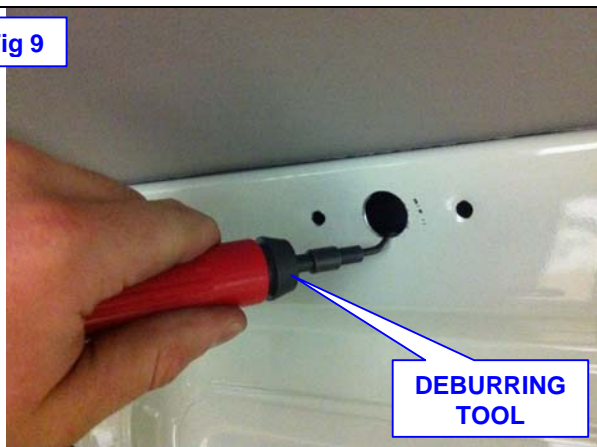
Fig 8



8. Installing the top anchor plates

- Using a ruler measure 390mm from panel join above the seat belt mount towards the rear of the vehicle.
- Then measure 25mm down from the roof lining and cover this area with masking tape. Mark the measured point on the masking tape.
- Place a cover plate over this point and mark the outer 7mm holes on the masking tape.
- Drivers side shown, repeat for passenger side.

Fig 9



9. Installing the top anchor plates

- Mark the measured points using a centre punch.
- Using a 7mm drill piece, drill all holes marked.
- Using a 19mm hole saw with a non-cutting pilot, drill the centre mount hole.
- Remove all sharp edges using a deburring tool.
- Coat raw edges with anti-rust grease.

HAYMAN REESE

PART No: 41292

CARGO BARRIER

INSTALLATION INSTRUCTIONS

PLEASE ENSURE THAT INSTRUCTIONS ARE UNDERSTOOD PRIOR TO FITMENT

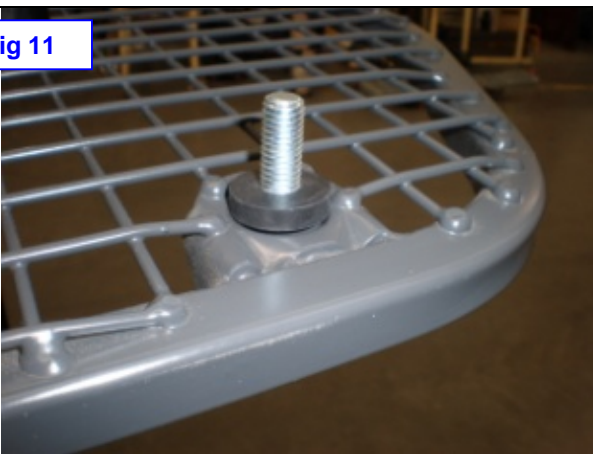
Fig 10



10. Installing top anchor plates

- a. Using a cable tie provided, feed the anchor plate over the cable tie.
- b. Insert the anchor plate through the 19mm hole.
- c. With the anchor plate behind the panel, feed the cover plate over the cable tie.
- d. Secure the mounting assembly to the panel using the M6 button head bolts and M6 washers.

Fig 11



11. Installing barrier

- a. With the barrier outside of the vehicle, insert the M10 coach bolts into the top mounting points on the barrier.
- b. Secure the coach bolts in place using the rubber bushes provided.

Fig 12



12. Installing the barrier

- a. Insert the barrier through the side door of the vehicle.
- b. Using the 70mm cargo bolts, 50mm plastic bushes, M10 flat washers and the wave washers, secure the barrier to the bulk head as shown in Fig. 12.

HAYMAN REESE

PART No: 41292

CARGO BARRIER

INSTALLATION INSTRUCTIONS

PLEASE ENSURE THAT INSTRUCTIONS ARE UNDERSTOOD PRIOR TO FITMENT

Fig 13



13. Installing the cargo barrier

- a. Using the 25mm cargo bolts, 5mm plastic bushes, hand knobs, M10 flat washers and the wave washers, secure the top strap to the cant rail. See Fig. 13. For detail.

Fig 14



14. Fully installed barrier

- a. With the barrier in position and the barrier located centrally about the car, tighten all hand knobs and cargo bolts.

CUSTOMER INSTRUCTIONS

PLEASE ENSURE THAT INSTRUCTIONS UNDERSTOOD PRIOR TO FITMENT

Vehicle Make: Toyota

Vehicle Model: Hiace 550N 6.0 LWB

Applicability: Non Side Curtain Airbag Vehicle

Vehicle Type: Van

Vehicle Years of Manufacture: 04-2005 Production onwards

Rating: 60Kg Single Mass

Location: Behind First Row Seat

CRD Fitted: No

Warnings

The rating plaque shall not be removed from the cargo barrier.

- Long thin items of cargo should be positioned in the vehicle with the long axis across the vehicle to minimise the penetration risk. Position loads against the cargo barrier.
- Do not attach objects to the front of the barrier.
- Regularly check fasteners are tight.
- When the barrier is installed the area behind the barrier is to be used for cargo only.
- In the event of an accident the cargo barrier may deform into the passenger area and the mounting points may be weakened. Please have the installation checked by an authorized [Hayman Reese](#) dealer in the event of an accident.
- The high tensile fasteners supplied with this barrier were used to achieve the specified rating. If replacement parts are required contact an authorized [Hayman Reese](#) dealer.
- This cargo barrier is capable of being fitted only behind the first row seats.
- Place these instructions in the glove compartment of the vehicle after the installation.



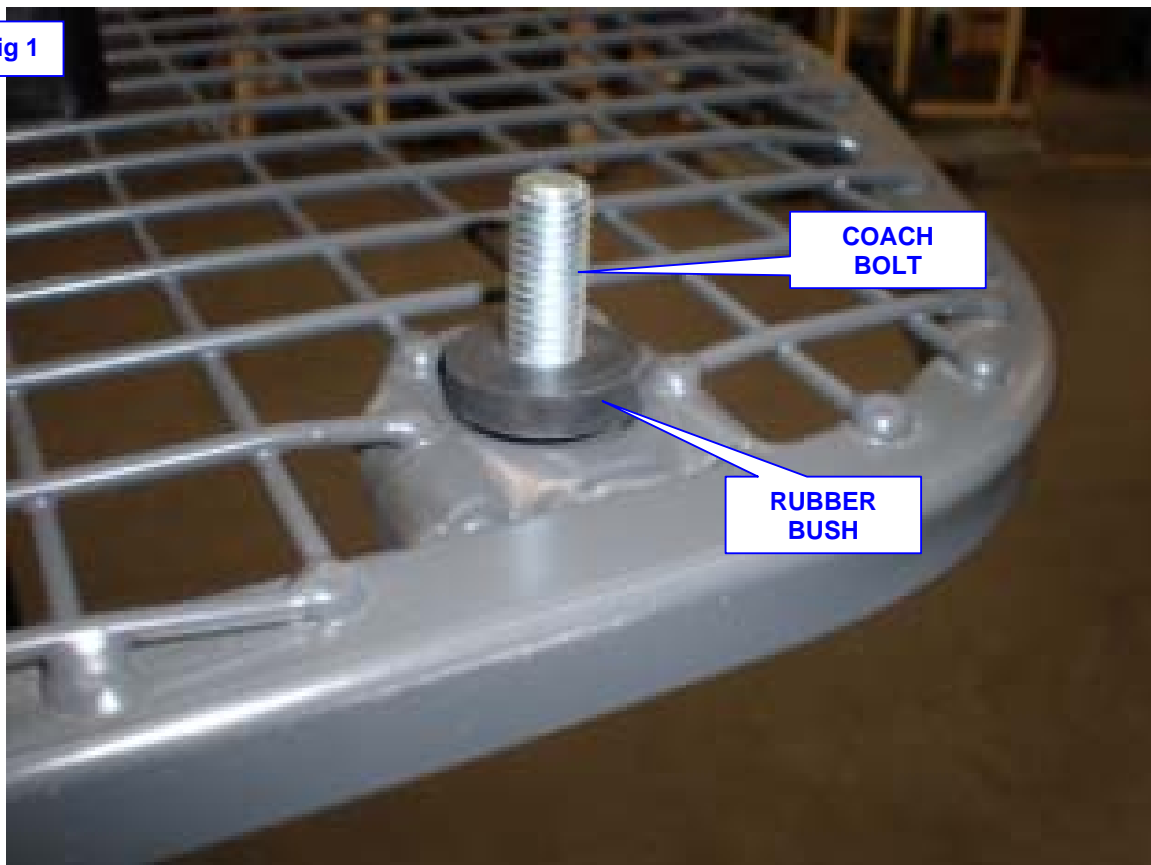
CUSTOMER INSTRUCTIONS

PLEASE ENSURE THAT INSTRUCTIONS UNDERSTOOD PRIOR TO FITMENT

Fig 1. PREPARING THE BARRIER

- a. With the barrier outside of the vehicle, insert the M10 coach bolts into the top mounting points on the barrier.
- b. Secure the coach bolts in place using the rubber bushes provided.

Fig 1

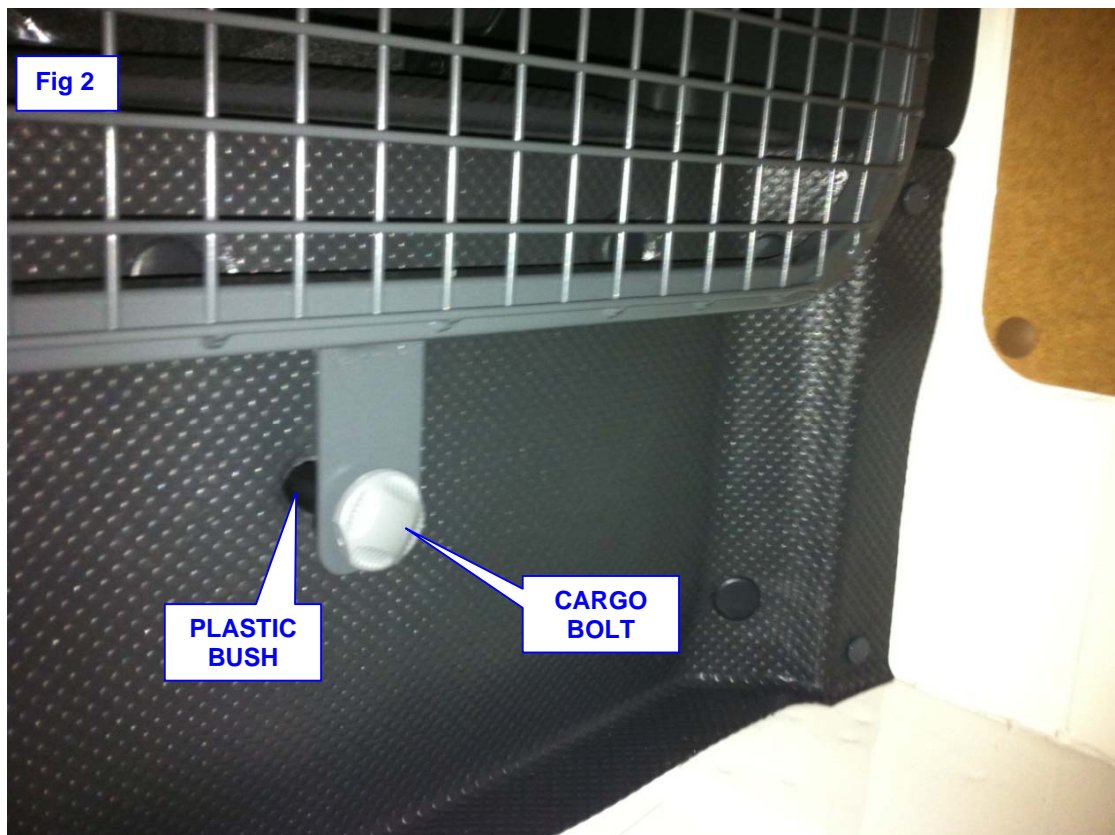


CUSTOMER INSTRUCTIONS

PLEASE ENSURE THAT INSTRUCTIONS UNDERSTOOD PRIOR TO FITMENT

Fig 2. FASTENING BOTTOM MOUNTS

- a. Insert the barrier through the side door of the vehicle.
- b. Using the 70mm cargo bolts, 50mm plastic bushes, M10 flat washers and the wave washers, secure the barrier to the bulk head as shown.



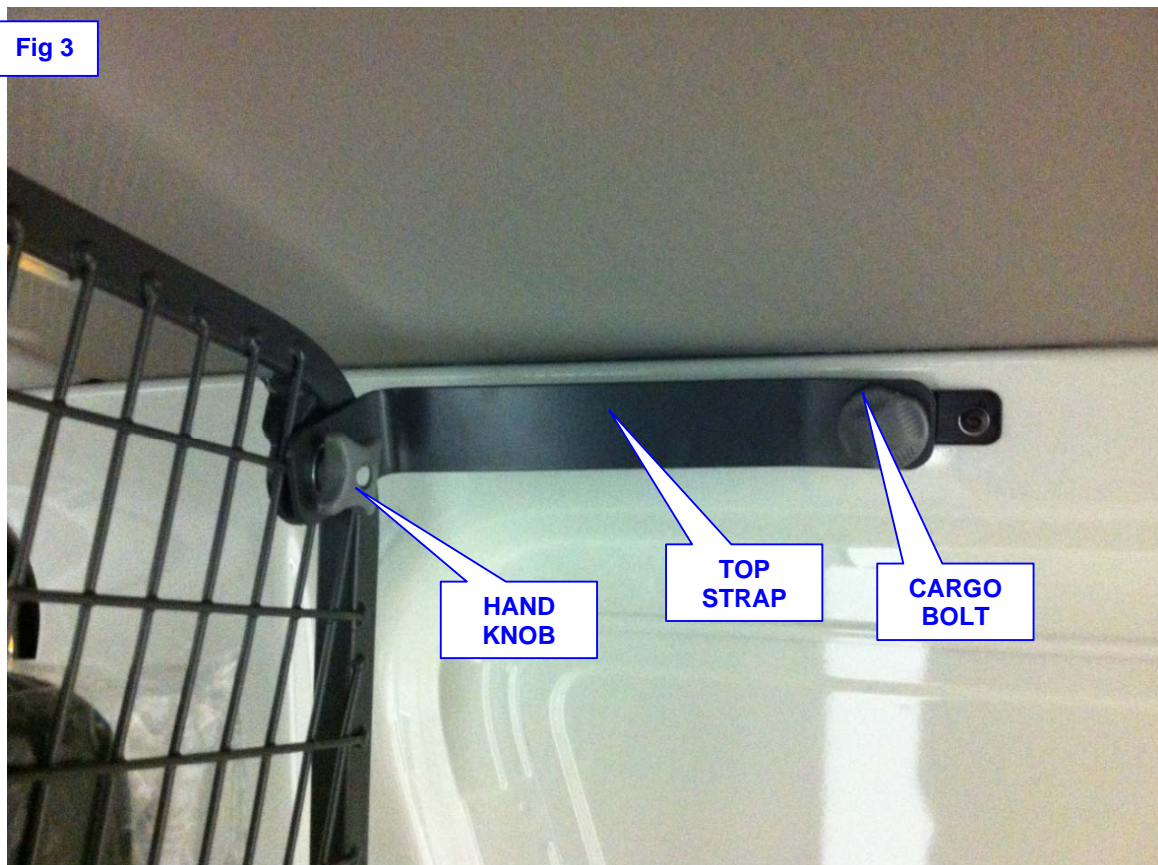
CUSTOMER INSTRUCTIONS

PLEASE ENSURE THAT INSTRUCTIONS UNDERSTOOD PRIOR TO FITMENT

Fig 3. FITTING TOP STRAPS

- a. Using the 25mm cargo bolts, 5mm plastic bushes and the wave washers, secure the upper cant rail.

Fig 3



PART No: 41292
CARGO BARRIER

CUSTOMER INSTRUCTIONS

PLEASE ENSURE THAT INSTRUCTIONS UNDERSTOOD PRIOR TO FITMENT

Fig 4. FULLY INSTALLED BARRIER

